



VALLA 90 D MOBILE CRANE MAX CAPACITY 9 t

DIESEL POWERED



ENGINE: Diesel 51 HP, 4 cylinders, water cooled with electric starter and automatic fuel switch off.

TRANSMISSION: Automatic (hydrostatic) "automotive". Differential axle. Max speed 13 Km/h.

BRAKES: Foot operated hydraulic shoe brakes to driving and front wheels. Hand brake cable operated to driving wheels.

STEERING: Power steering operated through own hydraulic circuit by a telescopic ram fitted between the articulated power unit and the crane frame. Allowing 140° steering (ORBITROL system). Fitted with safety valves and filter.

CRANE FRAME: Fabricated from preformed and welded quality steel plate with built-in counterweight.

WHEELS: Rear 2 pneumatic tires 225-75 R10". Front 4 solid tires 23 x 10 - 12".

BOOM: Fabricated from preformed and welded quality steel plate with 3 hydraulic telescoping sections on nylon wear pads.

HYDRAULIC SYSTEM: In own enclosed circuit powered by a gear pump through proportional distributor controlled by joystick. Fitted with safety valves and filters on all boom operations. Maximum hydraulic pressure 200 bar.

DRIVER'S OVERHEAD GUARD: Steel frame with metal checker plate and full visibility.

WEIGHT: Kg. 9.000~.

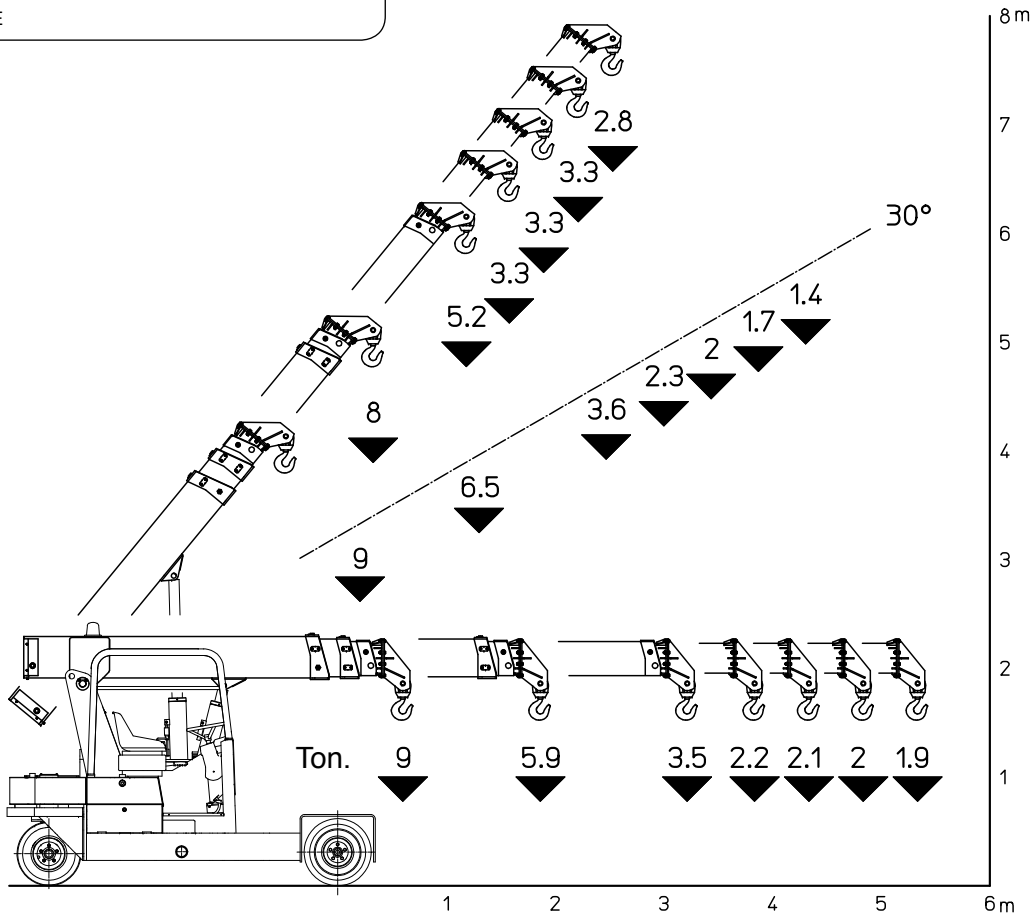
OPTIONAL EXTRAS: L.M.I. (electronic Load Moment Indicator), manual boom extension, man bucket, remote control, canvas cab, metal/glass enclosed cab, hydraulic winch, hydraulic chain hoist, carry deck, LPG conversion.

Valla S.p.A.

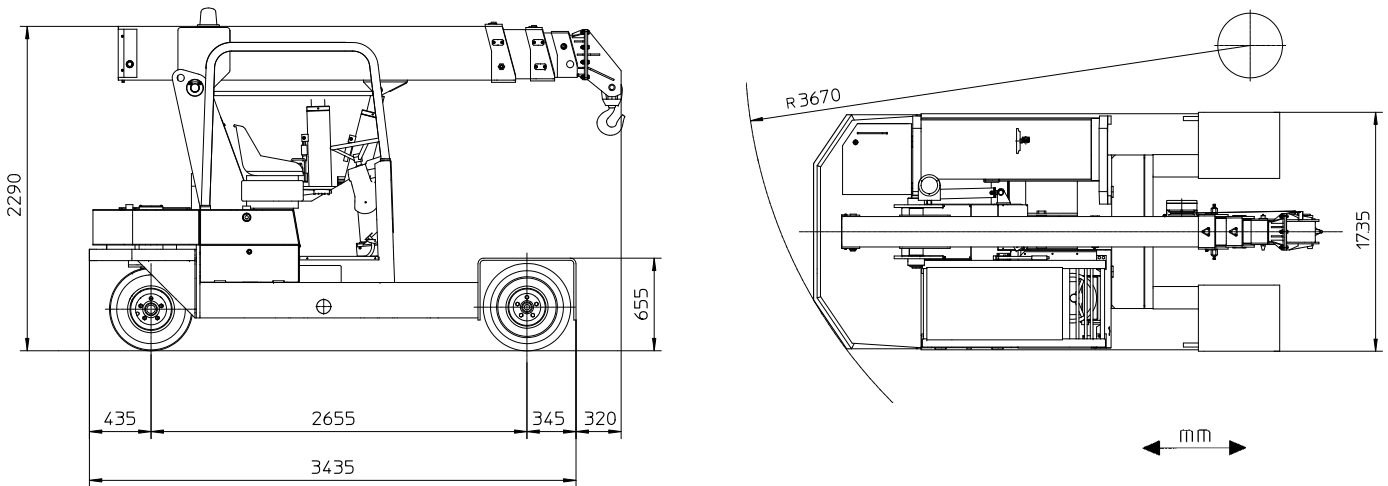
Via Piacenza, 45 - 29010 Calendasco - Piacenza - ITALIA
Tel. 0039 0523 762025 - 762004 - Fax 0039 0523 760531
Internet: www.valla.com - email: info@valla.com

The crane complies with following international standards:

- I.S.P.E.S.L.
- DIN 15018(1,3) - 15019 (1) Class H2 B3
- ANSI - 1994
- 98/37/CE
- 89/336/CEE



VALLA MODEL 90 D



Valla S.p.A.

Via Piacenza, 45 - 29010 Calendasco - Piacenza - ITALIA
 Tel. 0039 0523 762025 - 762004 - Fax 0039 0523 760531
 Internet: www.valla.com - email: info@valla.com

