



Valla®



VALLA 35 D MOBILE CRANE MAX CAPACITY 3,5 t



ENGINE: 3 cylinders, water cooled diesel engine 22 HP 17 kW.

TRANSMISSION: automatic (hydrostatic) - max speed 8 k/h with final reduction gear in oil bath.

BRAKES: foot operated hydraulic brake to driving wheel. Hand brake cable operated to driving wheel.

STEERING: power steering operated through own hydraulic circuit 180° steering. Fitted with safety valves and filter.

CRANE FRAME: fabricated from preformed and welded steel plate with built in counterweight.

WHEELS: rear 1 Superelastic 18 x 7 x 8". Front 4 superelastic tires 15 x 4_{1/2} x 8".

BOOM: fabricated from preformed and welded steel plate with 3 hydraulic telescoping sections fitted with adjustable nylon wear pads.

HYDRAULIC SYSTEM: in own enclosed circuit powered by a gear pump through two control valves, lever operated, 1 for boom raise and lower, 1 for boom extending and retraction. Fitted with safety valves and filters. Maximum hydraulic pressure 180 Bar.

DRIVER'S OVERHEAD GUARD: a steel frame over driver's seat allowing full visibility with metal checker plate overhead.

TOTAL MACHINE WEIGHT: 3.000 kg.

OPTIONAL EXTRAS: L.M.I. (Load Moment Indicator), manual boom extension, man bucket, remote control, canvas cab, metal enclosed cab, hydraulic winch, hydraulic chain hoist, carry deck, LPG conversion.

Valla S.p.A.

Via Piacenza, 45 - 29010 Calendasco - Piacenza - ITALIA
Tel. 0039 0523 762025 - 762004 - Fax 0039 0523 760531
Internet: www.valla.com - email: info@valla.com

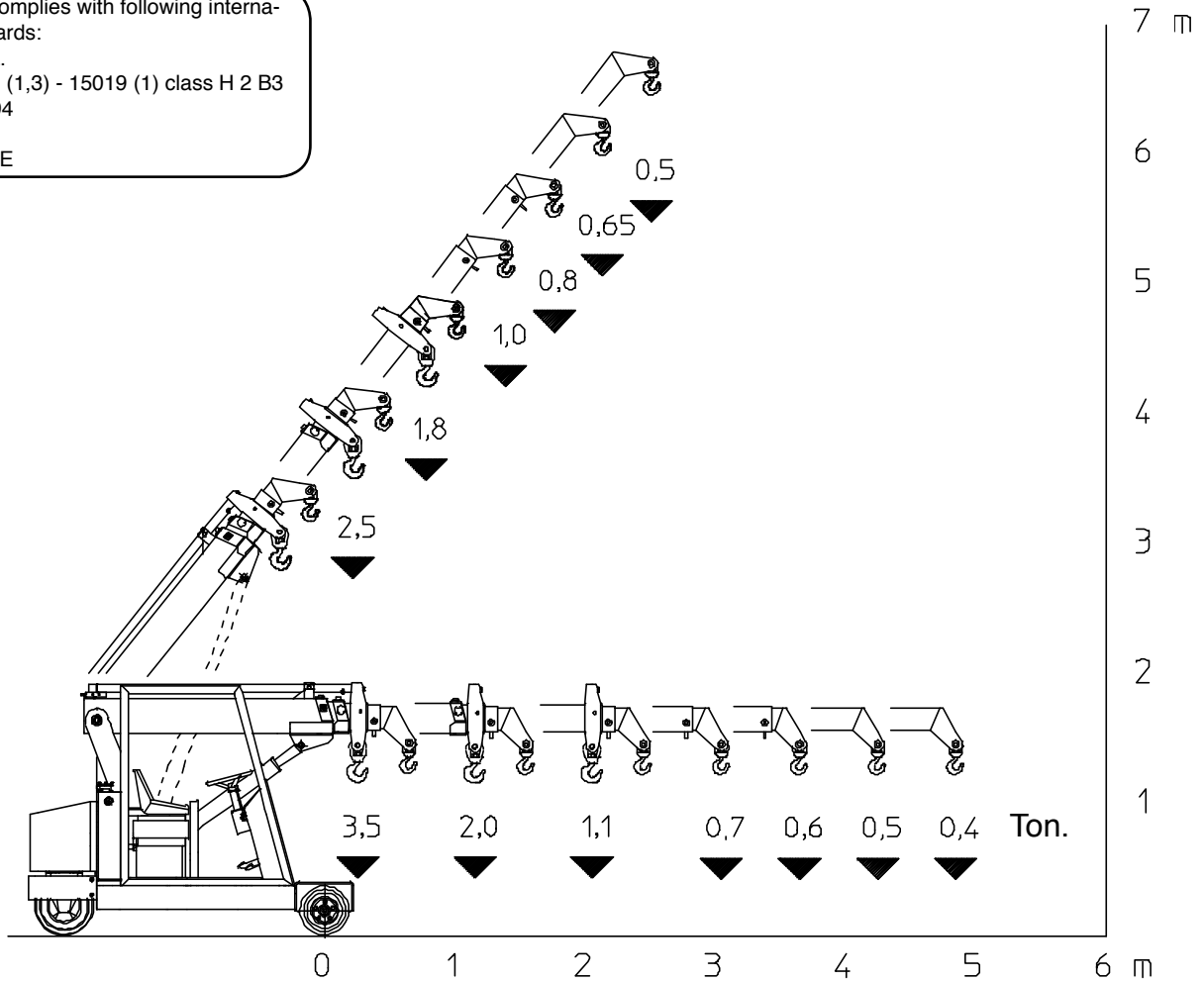
Printed by VALLA S.p.a.

September 2005

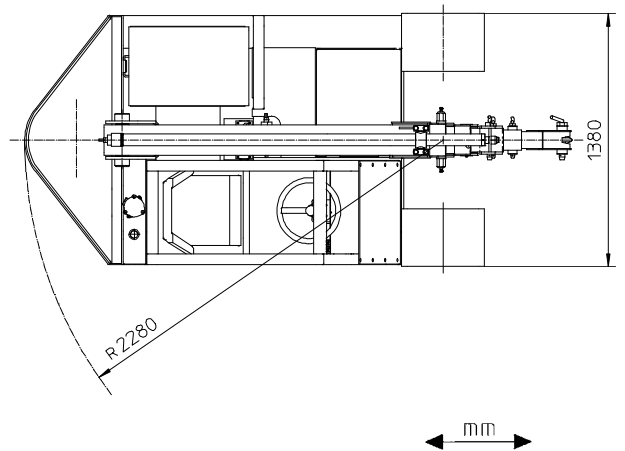
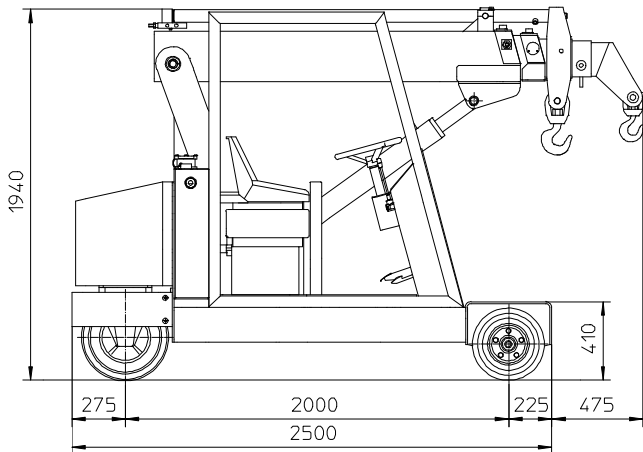
Data above are subject to be changed without any previous notice.

The crane complies with following international standards:

- I.S.P.E.S.L.
- DIN 15018 (1,3) - 15019 (1) class H 2 B3
- ANSI - 1994
- 98/37/CE
- 89/336/CEE



VALLA MODEL 35 D



Valla S.p.A.

Via Piacenza, 45 - 29010 Caldasco - Piacenza - ITALIA
 Tel. 0039 0523 762025 - 762004 - Fax 0039 0523 760531
 Internet: www.valla.com - email: info@valla.com

