



VALLA 120 D MOBILE CRANE MAX CAPACITY 12 t



ENGINE: 4 cylinders, water cooled diesel engine, fitted with electric starter and automatic fuel switch off.

TRANSMISSION: full automatic hydraulic 2 speeds torque converter. Max speed 14 km/h. Differential axle.

BRAKES: foot operated hydraulic brakes to driving and front wheels. Hand brake cable operated to driving wheels.

STEERING: power steering operated through own hydraulic circuit by a telescopic ram fitted between the articulated power unit and the crane frame. Allowing 140° steering. Fitted with safety valves and filter.

SUSPENSION: oscillating rear axle with mechanical lock.

CRANE FRAME: fabricated from preformed and welded steel plate with built-in counterweight.

BOOM: fabricated from preformed and welded steel plate with 3 hydraulic telescoping sections fitted with adjustable nylon wear pads.

WHEELS: rear 2 tires 27 x 10 x 12. Front 4 tires 7.00 - 12".

HYDRAULIC SYSTEM: in own enclosed circuit powered by a gear pump through two self cancelling control valves, lever operated, 1 for boom raise and lower, 1 for boom extension and retraction. Fitted with safety valves and filters. Maximum hydraulic pressure 220 Bar.

DRIVER'S OVERHEAD GUARD: a steel frame over driver's seat allowing full visibility with metal checker plate overhead.

WEIGHT: 14.500 kg.

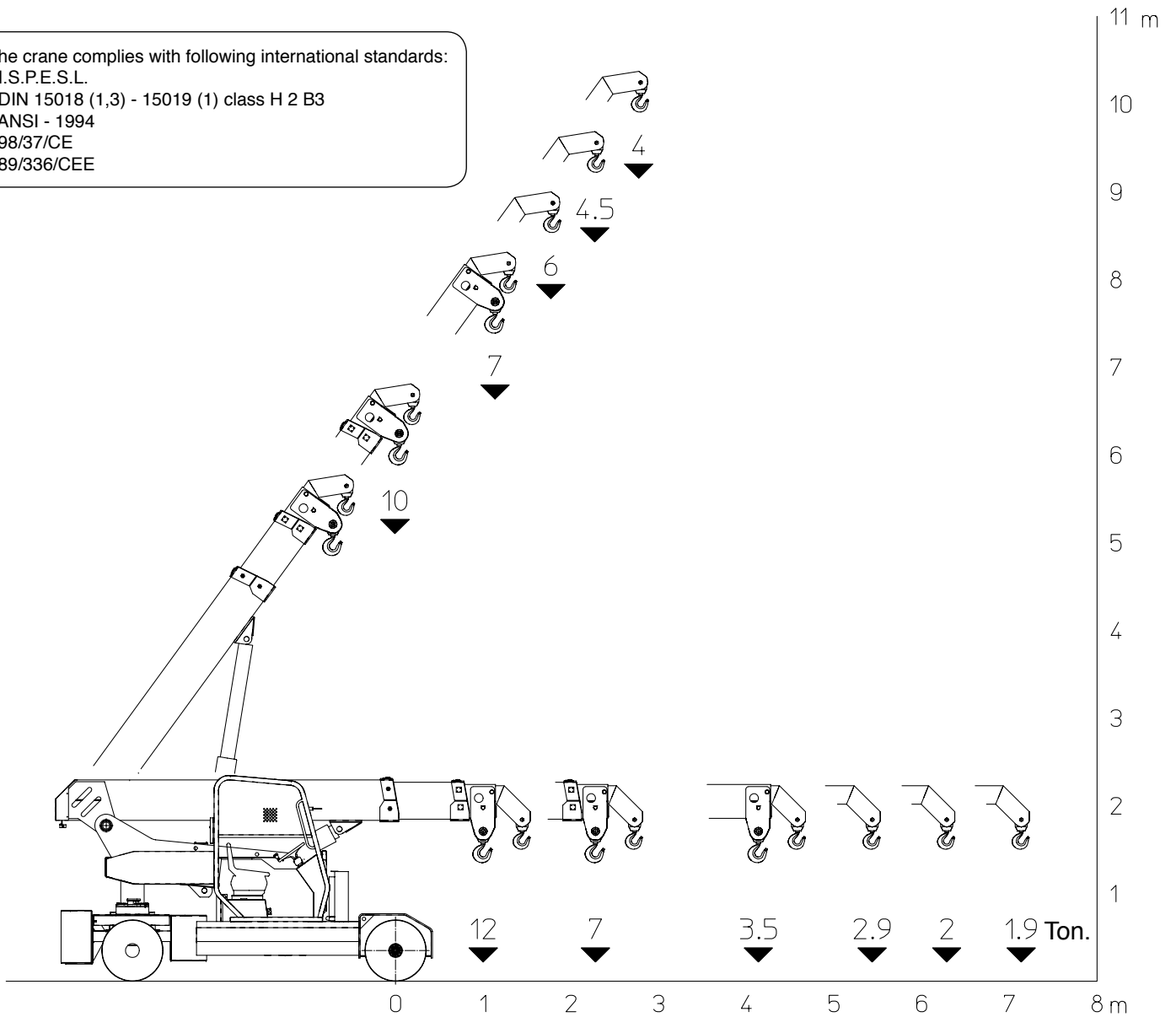
OPTIONAL EXTRAS: L.M.I. (Electronic Load Moment Indicator), manual boom extension, man bucket, remote control, canvas cab, metal/glass enclosed cab, hydraulic winch, hydraulic chain hoist, carry deck, LPG conversion.

Valla S.p.A.

Via Piacenza, 45 - 29010 Caldasco - Piacenza - ITALIA
Tel. 0039 0523 762025 - 762004 - Fax 0039 0523 760531
Internet: www.valla.com - email: info@valla.com

The crane complies with following international standards:

- I.S.P.E.S.L.
- DIN 15018 (1,3) - 15019 (1) class H 2 B3
- ANSI - 1994
- 98/37/CE
- 89/336/CEE



VALLA MODEL 120 D

